

049157

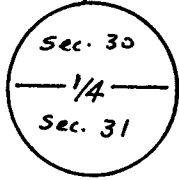
RECEIVED
LARAMIE COUNTY
CHEYENNE, WY.

CERTIFIED LAND CORNER RECORDATION

'88 SEP 22 PM 3 33

T14N R66W

DESCRIPTION OF CORNER EVIDENCE FOUND, AND ORIGINAL RECORD (if known)

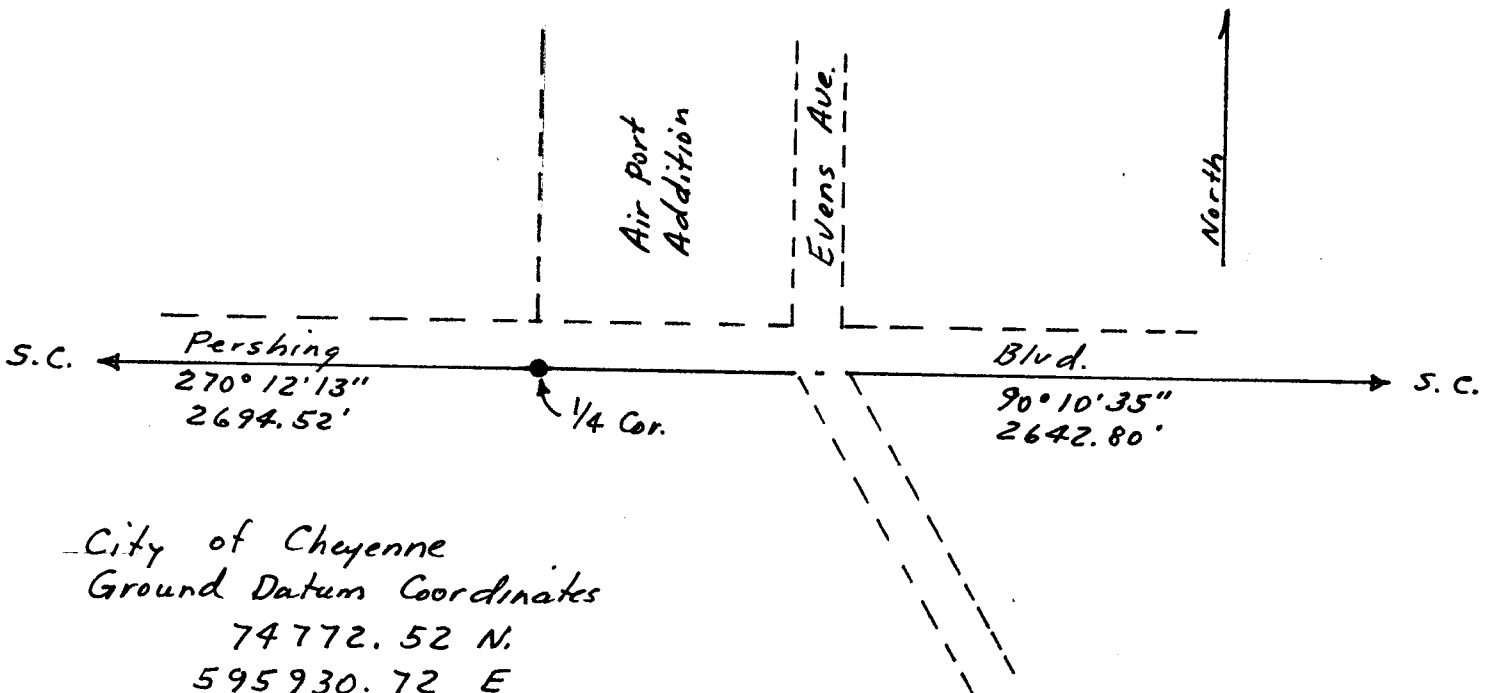


Found a decayed Post. G.L.O. Monument described as a Red Sandstone 30" x 12" x 6".

DESCRIPTION OF MONUMENT AND ACCESSORIES ESTABLISHED TO PERPETUATE THE ORIGINAL LOCATION OF THIS CORNER:

Set a 2" x 24" Galvanized Iron Pipe with Aluminum Cap in a Square Monument Box.

SKETCH, WITH COURSE AND DISTANCE TO ADJACENT CORNER IF DETERMINED IN THIS SURVEY. (May Sketch or Paste Reproduction on Reverse Side.)



City of Cheyenne
Ground Datum Coordinates
74772.52 N.
595930.72 E
Field Survey July, 1988

I, Edward C. Fry certify that I have carefully performed ~~or reviewed~~ the work done on the diagrammed corner as reported on this recordation form and approve the same.

Edward C. Fry PE/LS 662
Signature of Surveyor Registration No.

STATE OF WYOMING,
Office of Clerk and Recorder,
County of Laramie

This "corner record" was filed for record on the 20 day of September, 1988, was noted on the cross-index plat and is assigned page No. 624, in book No. 1265.

Janet C. Whitehead
County Official
Cross Index No. _____ T. _____ R. _____ Mer.
_____ T. _____ R. _____ Mer.
_____ T. _____ R. _____ Mer.
_____ T. _____ R. _____ Mer.
_____ T. _____ R. _____ Mer.
_____ T. _____ R. _____ Mer.
_____ T. _____ R. _____ Mer.